



WWW.CTA.IL.gov  
630.741.3122

EVERITT MIDDLE SCHOOL  
RENOVATION/REMODEL  
3900 KIPLING STREET, WHEAT RIDGE, CO

ISSUED FOR PERMIT

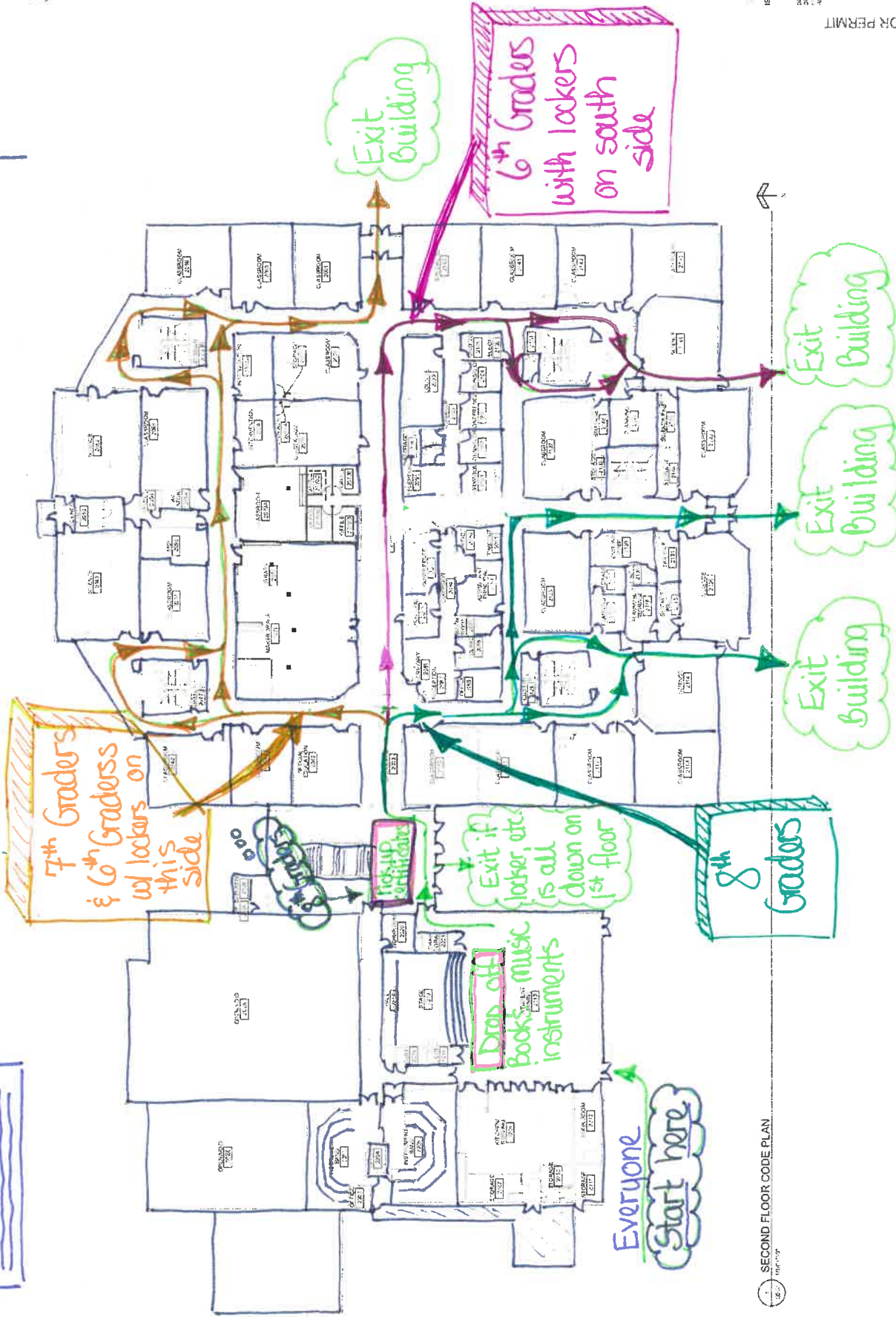
DATE: 08/11/09  
DRAWN BY: [unclear]  
CHECKED BY: [unclear]

SECOND FLOOR  
CODE PLAN

G012



2nd Floor



1 SECOND FLOOR CODE PLAN



www.cta.com

EVERITT MIDDLE SCHOOL  
RENOVATION/REMODEL  
3900 KIPLING STREET, WHEAT RIDGE, CO

PERMIT

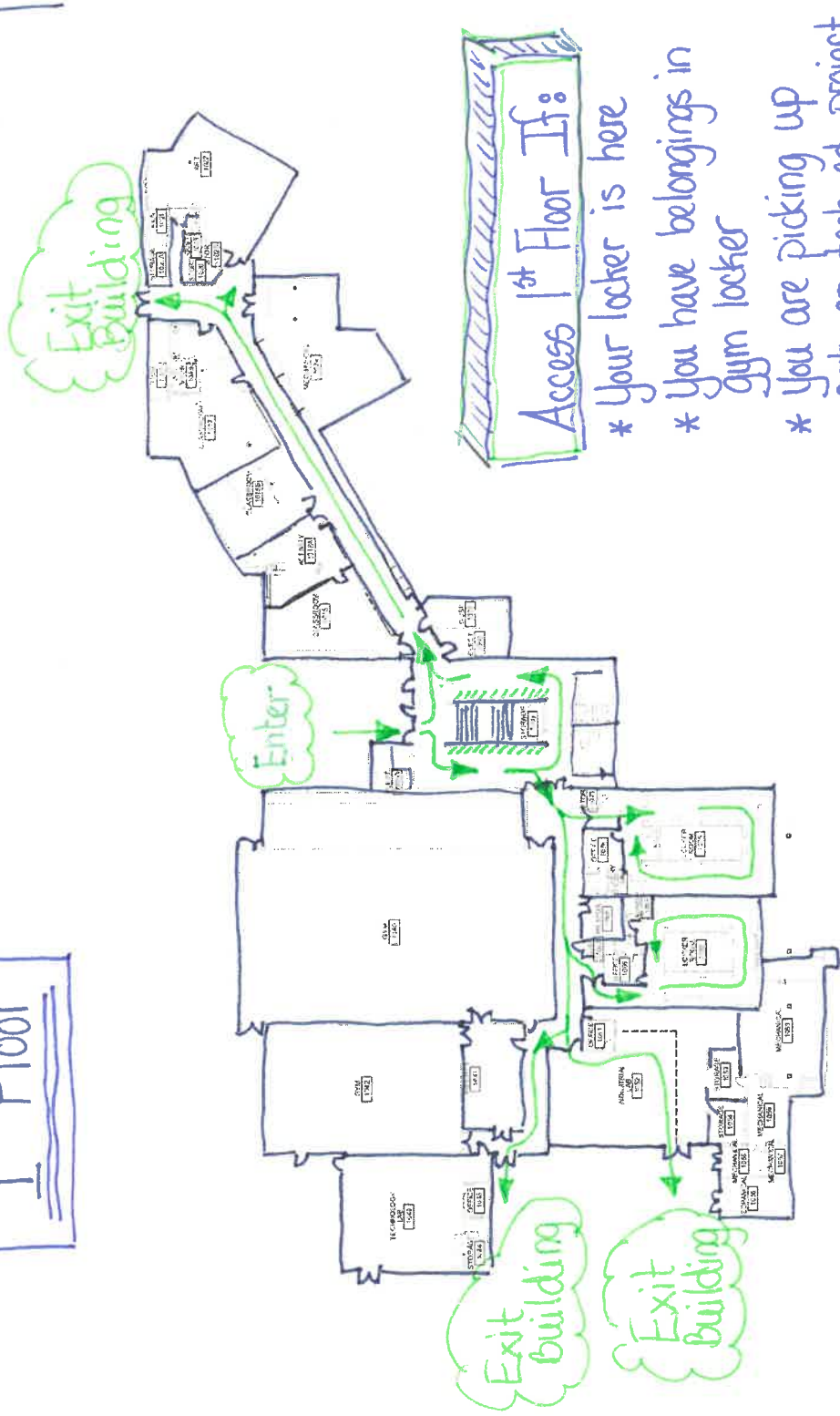
DATE: 11/12/13  
DRAWN BY: [unclear]  
CHECKED BY: [unclear]

ISSUED FOR PERMIT

FIRST FLOOR CODE  
PLAN

G011

1st Floor



Access 1st Floor If:

- \* Your locker is here
- \* You have belongings in gym locker
- \* You are picking up art or tech-ed project (8th graders or moving to new school)

FIRST FLOOR CODE PLAN